

Tenants Insurance do I need it?

Yes, your deposit is at risk
if you damage your landlords
fixtures and fittings

Do I need to cover my
own contents?

There is no legal requirement to
buy cover for your own contents.
However, can you afford to replace
your iPhone, laptop, iPad, bicycle &
contents if they were lost, stolen or
damaged?

Pets Extension to
Standard Package
available.†



Flexible cover
from only £65.00
under our Standard
Package*

Other Options and Instalments Available
Subject to Status



For a quote visit
welovetenants.co.uk
insurance with love

* Standard Package provides cover for up to £4,000 for accidental damage caused by you to your Landlord's Contents, Fixtures & Fittings & £2M Personal Liability subject to £100 excess. Terms & Conditions apply. Your own contents are not insured - but can be added for an additional premium.

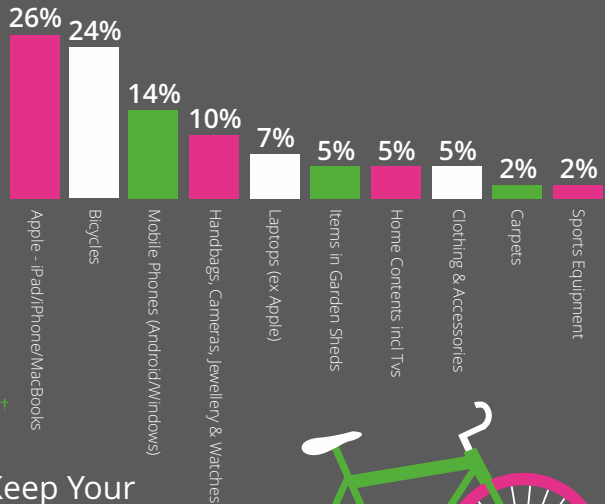
† Pets extension - our Standard Package* can be upgraded to include cover for accidental damage caused by your domestic pet. Damage to tenants own contents is excluded. Indication additional premium from as little as £38.50 inclusive of Insurance Premium Tax. Terms & Conditions apply. Cover is only available from our team on 01223 792297.

WeLoveTenants is a trading style of NWBIB Ltd. Registered in England and in Wales No.1149934 at Lakeside 300, Old Chapel Way, Broadland Business Park, Norwich NR7 0WG. Authorised and regulated by the Financial Conduct Authority No. 306173.

Interesting Claims Facts - what you need to know



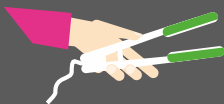
26% of all our claims were for Apple products, many for damage from spills (wine and coffee), theft, loss and cracked screens.**



Simple Tips to Help Keep Your Damage Deposit Safe

In 2012, 45% of TDS disputes related to damage and 28% for decoration.*

Always use an ironing board – most claims for iron burns were from tenants ironing on the carpet.



Hair straighteners can cause burns to carpets and worktops. Always use a protective mat and switch them off as soon as you've finished with them.



Between May 2013 and April 2014 92,508 bikes were reported as stolen in England & Wales.**

Crime Prevention Tip: *Always lock your bike to an immovable object to reduce the risk of theft, and also to ensure you're covered (this is usually a condition of cover).*

For regular tips to help protect you and your family – please follow us!



@WL_Tenants



Welovetenants



www.welovetenants.co.uk

**Claims percentage correct as of 01/09/15

*Source: ISBN 978-0-9571931-3-0 Tenancy Deposit Protection: An evaluation of the legislation, five years on

**Source: <http://www.telegraph.co.uk/men/active/recreational-cycling/11180315/Where-is-the-worst-place-for-bicycle-theft-in-England.html>